

**Student:** \_\_\_\_\_  
**Date:** \_\_\_\_\_

**Instructor:** Alfredo Alvarez  
**Course:** math1314newcoreq2019

**Assignment:**  
 finalm1314COC049sulllljjRZ

1. Evaluate the following expression, if possible.

$$\sqrt[3]{(6p-5)^3}$$

$$\sqrt[3]{(6p-5)^3} = \boxed{\phantom{000}} \text{ (Simplify your answer.)}$$

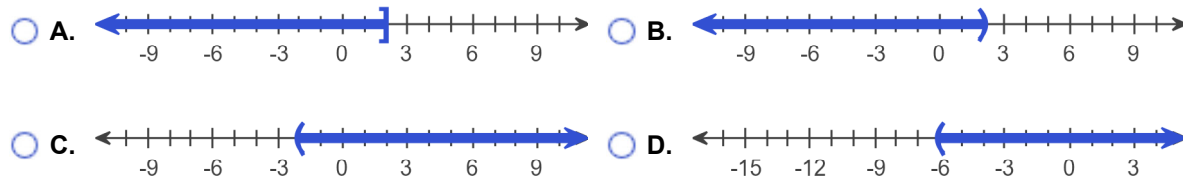
Answer:  $6p - 5$

ID: P1.2.43

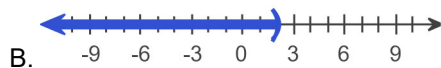
2. Solve the inequality  $16 - 3x > 10$ . Graph the solution set.

In set notation, the solution is  $\{x | \boxed{\phantom{000}}\}$ . (Type an inequality.)

Graph the solution set. Choose the correct graph below.



Answers  $x < 2$



ID: 1.1.4

3. Find the following for the function  $f(x) = 3x^2 + 4x - 2$ .

(a) $f(0)$	(b) $f(4)$	(c) $f(-4)$	(d) $f(-x)$
(e) $-f(x)$	(f) $f(x+1)$	(g) $f(4x)$	(h) $f(x+h)$

(a)  $f(0) =$   (Simplify your answer.)

(b)  $f(4) =$   (Simplify your answer.)

(c)  $f(-4) =$   (Simplify your answer.)

(d)  $f(-x) =$   (Simplify your answer.)

(e)  $-f(x) =$   (Simplify your answer.)

(f)  $f(x+1) =$   (Simplify your answer.)

(g)  $f(4x) =$   (Simplify your answer.)

(h)  $f(x+h) =$   (Simplify your answer.)

Answers - 2

62

30

$3x^2 - 4x - 2$

$-3x^2 - 4x + 2$

$3x^2 + 10x + 5$

$48x^2 + 16x - 2$

$3x^2 + 6hx + 3h^2 + 4x + 4h - 2$

ID: 1.1.43

4. Find the domain of the function.

$$f(x) = \sqrt{4x - 20}$$

The domain is . (Type your answer in interval notation.)

Answer:  $[5, \infty)$

ID: 1.1.59

5. For the given functions  $f$  and  $g$ , complete parts (a)-(h). For parts (a)-(d), also find the domain.

$$f(x) = 4x + 7; g(x) = 8x - 1$$

- (a) Find  $(f + g)(x)$ .

$$(f + g)(x) = \boxed{\phantom{000000}} \text{ (Simplify your answer.)}$$

What is the domain of  $f + g$ ? Select the correct choice below and, if necessary, fill in the answer box to complete your choice.

- ☐ A. The domain is  $\{x \mid \phantom{000000}\}$ .  
(Use integers or fractions for any numbers in the expression. Use a comma to separate answers as needed.)
- ☐ B. The domain is  $\{x \mid x \text{ is any real number}\}$ .

- (b) Find  $(f - g)(x)$ .

$$(f - g)(x) = \boxed{\phantom{000000}} \text{ (Simplify your answer.)}$$

What is the domain of  $f - g$ ? Select the correct choice below and, if necessary, fill in the answer box to complete your choice.

- ☐ A. The domain is  $\{x \mid \phantom{000000}\}$ .  
(Use integers or fractions for any numbers in the expression. Use a comma to separate answers as needed.)
- ☐ B. The domain is  $\{x \mid x \text{ is any real number}\}$ .

- (c) Find  $(f \cdot g)(x)$ .

$$(f \cdot g)(x) = \boxed{\phantom{000000}} \text{ (Simplify your answer.)}$$

What is the domain of  $f \cdot g$ ? Select the correct choice below and, if necessary, fill in the answer box to complete your choice.

- ☐ A. The domain is  $\{x \mid \phantom{000000}\}$ .  
(Use integers or fractions for any numbers in the expression. Use a comma to separate answers as needed.)
- ☐ B. The domain is  $\{x \mid x \text{ is any real number}\}$ .

- (d) Find  $\left(\frac{f}{g}\right)(x)$ .

$$\left(\frac{f}{g}\right)(x) = \boxed{\phantom{000000}} \text{ (Simplify your answer.)}$$

What is the domain of  $\frac{f}{g}$ ? Select the correct choice below and, if necessary, fill in the answer box to complete your choice.

- ☐ A. The domain is  $\{x \mid \phantom{000000}\}$ .  
(Use integers or fractions for any numbers in the expression. Use a comma to separate answers as needed.)
- ☐ B. The domain is  $\{x \mid x \text{ is any real number}\}$ .

- (e) Find  $(f + g)(4)$ .

$$(f + g)(4) = \boxed{\phantom{000}} \text{ (Type an integer or a simplified fraction.)}$$

(f) Find  $(f - g)(3)$ .

$$(f - g)(3) = \boxed{\phantom{000}} \text{ (Type an integer or a simplified fraction.)}$$

(g) Find  $(f \cdot g)(2)$ .

$$(f \cdot g)(2) = \boxed{\phantom{000}} \text{ (Type an integer or a simplified fraction.)}$$

(h) Find  $\left(\frac{f}{g}\right)(1)$ .

$$\left(\frac{f}{g}\right)(1) = \boxed{\phantom{000}} \text{ (Type an integer or a simplified fraction.)}$$

Answers  $12x + 6$

B. The domain is  $\{x \mid x \text{ is any real number}\}$ .

$$-4x + 8$$

B. The domain is  $\{x \mid x \text{ is any real number}\}$ .

$$32x^2 + 52x - 7$$

B. The domain is  $\{x \mid x \text{ is any real number}\}$ .

$$\frac{4x + 7}{8x - 1}$$

A. The domain is  $\left\{x \mid \boxed{x \neq \frac{1}{8}}\right\}$ .

(Use integers or fractions for any numbers in the expression. Use a comma to separate answers as needed.)

$$54$$

$$-4$$

$$225$$

$$\frac{11}{7}$$

ID: 1.1.67

6. For the given functions  $f$  and  $g$ , complete parts (a)-(h). For parts (a)-(d), also find the domain.

$$f(x) = x - 1; g(x) = 3x^2$$

- (a) Find  $(f + g)(x)$ .

$$(f + g)(x) = \boxed{\phantom{000}} \text{ (Simplify your answer.)}$$

What is the domain of  $f + g$ ? Select the correct choice below and, if necessary, fill in the answer box to complete your choice.

- ☐ A. The domain is  $\{x \mid \phantom{000}\}$ .  
(Use integers or fractions for any numbers in the expression. Use a comma to separate answers as needed.)
- ☐ B. The domain is  $\{x \mid x \text{ is any real number}\}$ .

- (b) Find  $(f - g)(x)$ .

$$(f - g)(x) = \boxed{\phantom{000}} \text{ (Simplify your answer.)}$$

What is the domain of  $f - g$ ? Select the correct choice below and, if necessary, fill in the answer box to complete your choice.

- ☐ A. The domain is  $\{x \mid \phantom{000}\}$ .  
(Use integers or fractions for any numbers in the expression. Use a comma to separate answers as needed.)
- ☐ B. The domain is  $\{x \mid x \text{ is any real number}\}$ .

- (c) Find  $(f \cdot g)(x)$ .

$$(f \cdot g)(x) = \boxed{\phantom{000}} \text{ (Simplify your answer.)}$$

What is the domain of  $f \cdot g$ ? Select the correct choice below and, if necessary, fill in the answer box to complete your choice.

- ☐ A. The domain is  $\{x \mid \phantom{000}\}$ .  
(Use integers or fractions for any numbers in the expression. Use a comma to separate answers as needed.)
- ☐ B. The domain is  $\{x \mid x \text{ is any real number}\}$ .

- (d) Find  $\left(\frac{f}{g}\right)(x)$ .

$$\left(\frac{f}{g}\right)(x) = \boxed{\phantom{000}} \text{ (Simplify your answer.)}$$

What is the domain of  $\frac{f}{g}$ ? Select the correct choice below and, if necessary, fill in the answer box to complete your choice.

- ☐ A. The domain is  $\{x \mid \phantom{000}\}$ .  
(Use integers or fractions for any numbers in the expression. Use a comma to separate answers as needed.)
- ☐ B. The domain is  $\{x \mid x \text{ is any real number}\}$ .

- (e) Find  $(f + g)(3)$ .

$$(f + g)(3) = \boxed{\phantom{000}} \text{ (Type an integer or a simplified fraction.)}$$

(f) Find  $(f - g)(2)$ .

$$(f - g)(2) = \boxed{\phantom{000}} \text{ (Type an integer or a simplified fraction.)}$$

(g) Find  $(f \cdot g)(4)$ .

$$(f \cdot g)(4) = \boxed{\phantom{000}} \text{ (Type an integer or a simplified fraction.)}$$

(h) Find  $\left(\frac{f}{g}\right)(3)$ .

$$\left(\frac{f}{g}\right)(3) = \boxed{\phantom{000}} \text{ (Type an integer or a simplified fraction.)}$$

Answers  $3x^2 + x - 1$

B. The domain is  $\{x \mid x \text{ is any real number}\}$ .

$$-3x^2 + x - 1$$

B. The domain is  $\{x \mid x \text{ is any real number}\}$ .

$$3x^3 - 3x^2$$

B. The domain is  $\{x \mid x \text{ is any real number}\}$ .

$$\frac{x - 1}{3x^2}$$

A. The domain is  $\{x \mid \boxed{x \neq 0}\}$ .

(Use integers or fractions for any numbers in the expression. Use a comma to separate answers as needed.)

$$29$$

$$-11$$

$$144$$

$$\frac{2}{27}$$

ID: 1.1.69

7. Find the difference quotient of  $f$ ; that is, find  $\frac{f(x+h) - f(x)}{h}$ ,  $h \neq 0$ , for the following function. Be sure to simplify.

$$f(x) = x^2 - 8x + 3$$

$$\frac{f(x+h) - f(x)}{h} = \boxed{\phantom{000}}$$

Answer:  $2x + h - 8$

ID: 1.1.83

8. Given  $f(x) = x^2 - 2x + 2$ , find the value(s) for  $x$  such that  $f(x) = 17$ .
- 

The solution set is  $\{\text{[ ]}\}$ .

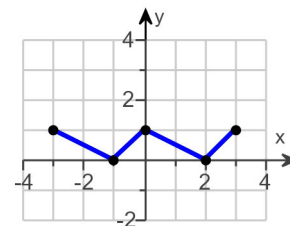
Answer: -3,5

ID: 1.1.91

---

9. Using the given graph of the function  $f$ , find the following.

- the intercepts, if any
- its domain and range
- the intervals on which it is increasing, decreasing, or constant
- whether it is even, odd, or neither



(a) What are the intercepts?

(Simplify your answer. Type an ordered pair. Use a comma to separate answers as needed.)

(b) The domain is .

(Type your answer in interval notation.)

The range is .

(Type your answer in interval notation.)

(c) On which interval(s) is the graph increasing? Select the correct choice below and fill in any answer boxes within your choice.

☐ **A.** The graph is increasing on \_\_\_\_\_.  
(Type your answer in interval notation. Use a comma to separate answers as needed.)

☐ **B.** The graph is not increasing on any interval.

On which interval(s) is the graph decreasing? Select the correct choice below and fill in any answer boxes within your choice.

☐ **A.** The graph is decreasing on \_\_\_\_\_.  
(Type your answer in interval notation. Use a comma to separate answers as needed.)

☐ **B.** The graph is not decreasing on any interval.

On which interval(s) is the graph constant? Select the correct choice below and fill in any answer boxes within your choice.

☐ **A.** The graph is constant on \_\_\_\_\_.  
(Type your answer in interval notation. Use a comma to separate answers as needed.)

☐ **B.** The graph is not constant on any interval.

(d) The function is (1)

- (1) ☐ odd.  
☐ neither odd nor even.  
☐ even.



Answers  $(-1, 0), (2, 0), (0, 1)$

$[-3, 3]$

$[0, 1]$

A. The graph is increasing on  $[-1, 0], [2, 3]$ .

(Type your answer in interval notation. Use a comma to separate answers as needed.)

A. The graph is decreasing on  $[-3, -1], [0, 2]$ .

(Type your answer in interval notation. Use a comma to separate answers as needed.)

B. The graph is not constant on any interval.

(1) neither odd nor even.

ID: 1.3.25

---

10. The function  $f$  is defined as follows.

$$f(x) = \begin{cases} -3x + 4 & \text{if } x < 1 \\ 2x - 1 & \text{if } x \geq 1 \end{cases}$$

- (a) Find the domain of the function.  
 (b) Locate any intercepts.  
 (c) Graph the function.  
 (d) Based on the graph, find the range.

(a) The domain of the function  $f$  is .

(Type your answer in interval notation.)

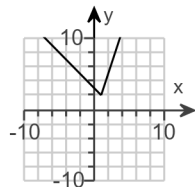
(b) Locate any intercepts. Select the correct choice below and, if necessary, fill in the answer box to complete your choice.

☐ A. The intercept(s) is/are .  
 (Type an ordered pair. Use a comma to separate answers as needed.)

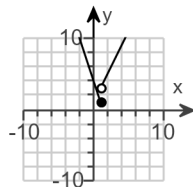
☐ B. There are no intercepts.

(c) Choose the correct graph below.

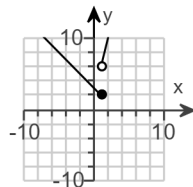
☐ A.



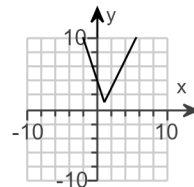
☐ B.



☐ C.



☐ D.



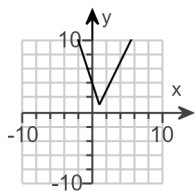
(d) The range of the function  $f$  is .

(Type your answer in interval notation.)

Answers  $(-\infty, \infty)$

A. The intercept(s) is/are  **(0,4)**.

(Type an ordered pair. Use a comma to separate answers as needed.)



D.

$[1, \infty)$

ID: 1.4.33

11. The function  $f$  is defined as follows.

$$f(x) = \begin{cases} 4 + 4x & \text{if } x < 0 \\ x^2 & \text{if } x \geq 0 \end{cases}$$

- (a) Find the domain of the function.  
 (b) Locate any intercepts.  
 (c) Graph the function.  
 (d) Based on the graph, find the range.

(a) The domain of the function  $f$  is .

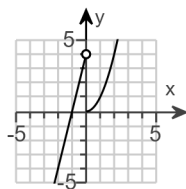
(Type your answer in interval notation.)

(b) Locate any intercepts. Select the correct choice below and, if necessary, fill in the answer box to complete your choice.

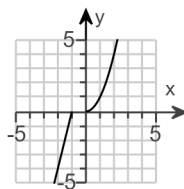
- ☐ A. The intercept(s) is/are .  
 (Type an ordered pair. Use a comma to separate answers as needed.)
- ☐ B. There are no intercepts.

(c) Choose the correct graph of  $f(x)$  below.

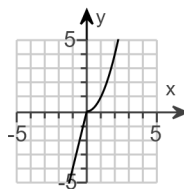
☐ A.



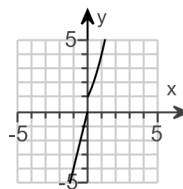
☐ B.



☐ C.



☐ D.



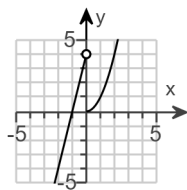
(d) The range of the function  $f$  is .

(Type your answer in interval notation.)

Answers  $(-\infty, \infty)$

A. The intercept(s) is/are .

(Type an ordered pair. Use a comma to separate answers as needed.)

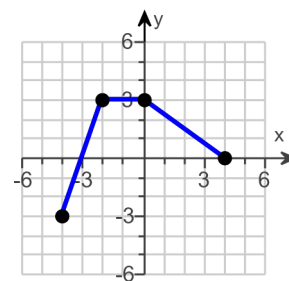


A.

$(-\infty, \infty)$

ID: 1.4.37

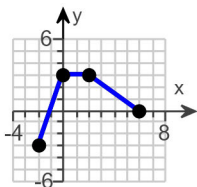
12. The graph of a function  $f$  is illustrated to the right. Use the graph of  $f$  as the first step toward graphing each of the following functions.



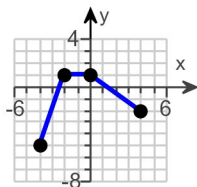
- (a)  $F(x) = f(x) + 2$       (b)  $G(x) = f(x + 3)$       (c)  $P(x) = -f(x)$
- (d)  $H(x) = f(x + 2) - 3$       (e)  $Q(x) = \frac{1}{3}f(x)$       (f)  $g(x) = f(-x)$
- (g)  $h(x) = f(2x)$

(a) Choose the correct graph of  $F(x) = f(x) + 2$  below.

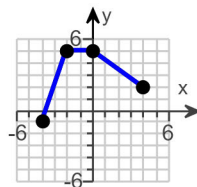
☐ A.



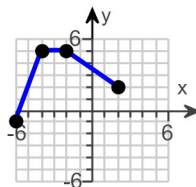
☐ B.



☐ C.

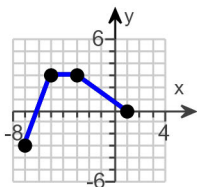


☐ D.

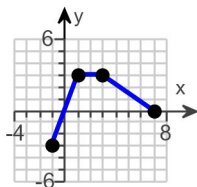


(b) Choose the correct graph of  $G(x) = f(x + 3)$  below.

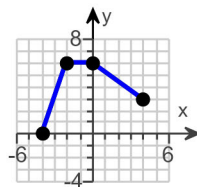
☐ A.



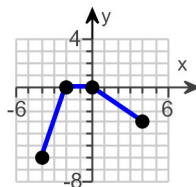
☐ B.



☐ C.

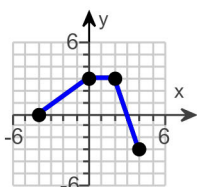


☐ D.

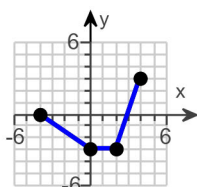


(c) Choose the correct graph of  $P(x) = -f(x)$  below.

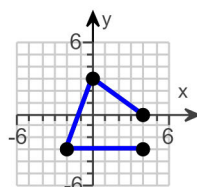
☐ A.



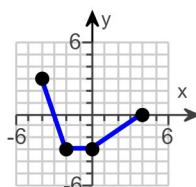
☐ B.



☐ C.

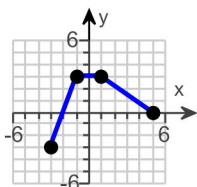


☐ D.

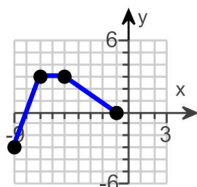


(d) Choose the correct graph of  $H(x) = f(x + 2) - 3$  below.

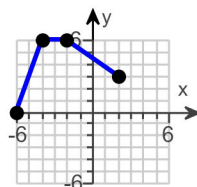
☐ A.



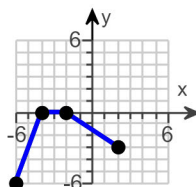
☐ B.



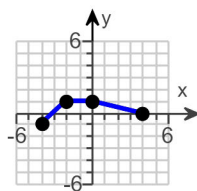
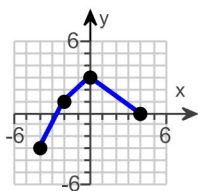
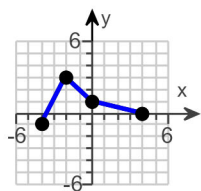
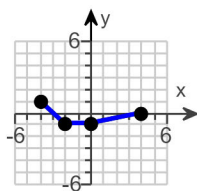
☐ C.



☐ D.

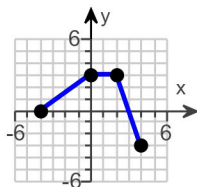


(e) Choose the correct graph of  $Q(x) = \frac{1}{3}f(x)$  below.

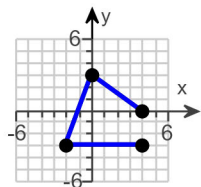


(f) Choose the correct graph of  $g(x) = f(-x)$  below.

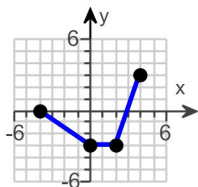
☐ A.



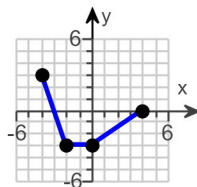
☐ B.



☐ C.

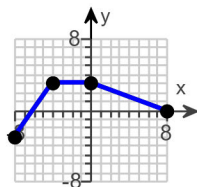


☐ D.

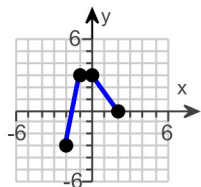


(g) Choose the correct graph of  $h(x) = f(2x)$  below.

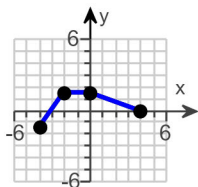
☐ A.



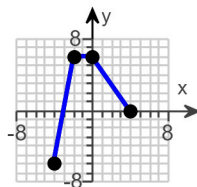
☐ B.



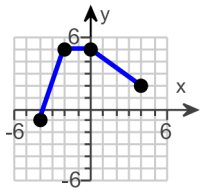
☐ C.



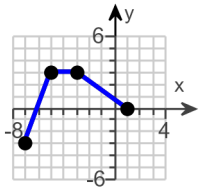
☐ D.



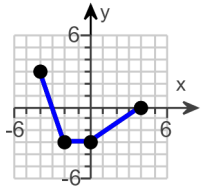
Answers



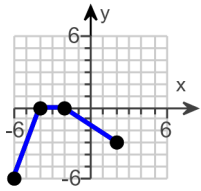
C.



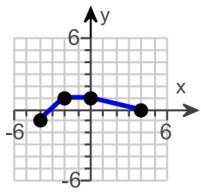
A.



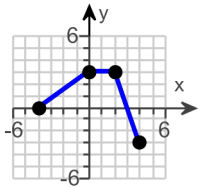
D.



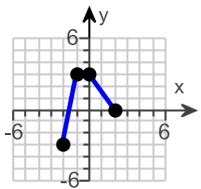
D.



D.



A.



B.

ID: 1.5.63

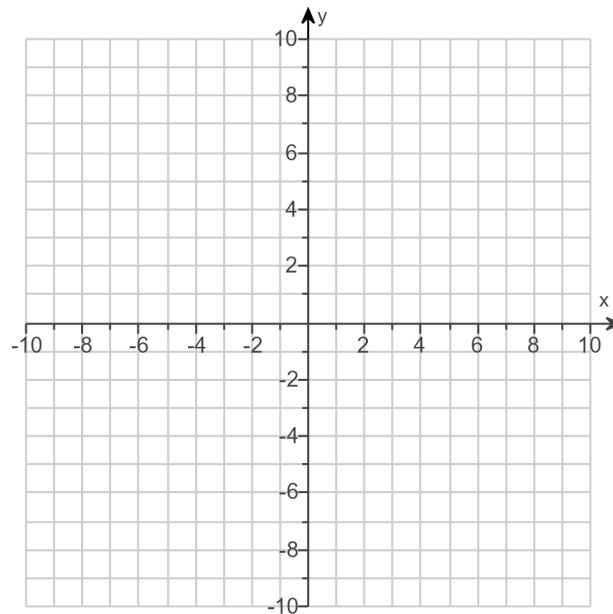
13.

- (a) Graph  $f(x) = |x - 7| - 2$  using transformations.  
(b) Find the area of the region bounded by  $f$  and the  $x$ -axis that lies below the  $x$ -axis.

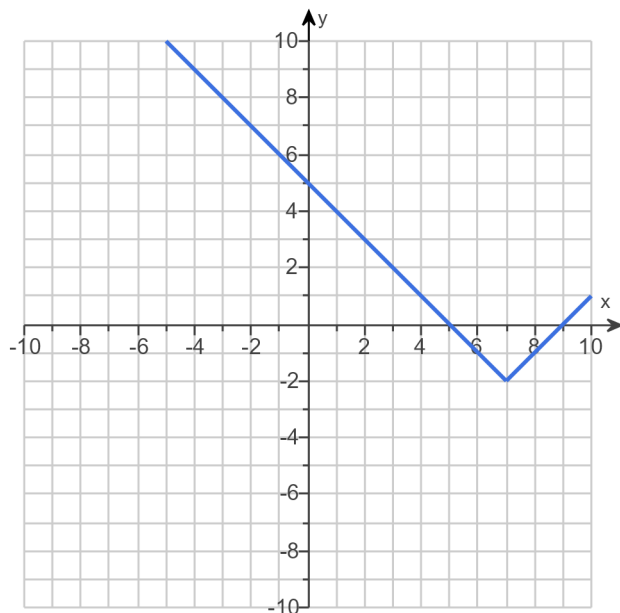
(a) Graph  $f(x)$ .

(Use the graphing tool provided to graph the function.)

- (b) The area of the region bounded by  $f$  and the  $x$ -axis that lies below the  $x$ -axis is  square units.  
(Simplify your answer.)



Answers



4

ID: 1.5.81

14. Factor the given polynomial completely. If the polynomial cannot be factored, say that it is prime.

$$x^2 + 18x + 77$$

Select the correct choice below and fill in any answer boxes within your choice.

- ☐ A.  $x^2 + 18x + 77 =$  \_\_\_\_\_
- ☐ B. The polynomial is prime.

Answer: A.  $x^2 + 18x + 77 =$   $(x + 7)(x + 11)$

ID: 2.3.1

15. Solve the equation.

$$(x - 8)(3x + 5) = 0$$

The solution set is {  }. (Use a comma to separate answers as needed.)

Answer:  $8, -\frac{5}{3}$

ID: 2.3.3

16. Find the zeros of the quadratic function by factoring. What are the x-intercepts of the graph of the function?

$$F(x) = x^2 + x - 2$$

Select the correct choice below and fill in the answer box to complete your choice.  
(Use a comma to separate answers as needed. Type an integer or a simplified fraction.)

- ☐ A. The zeros and the x-intercepts are the same. They are \_\_\_\_\_.
- ☐ B. The zeros and the x-intercepts are different. The zeros are \_\_\_\_\_, the x-intercepts are \_\_\_\_\_.

Answer: A. The zeros and the x-intercepts are the same. They are  $-2, 1$ .

ID: 2.3.17



17. Find the zeros of the quadratic function by factoring. What are the x-intercepts of the graph of the function?

$$g(x) = 3x^2 - 10x - 8$$

Select the correct choice below and fill in the answer box to complete your choice.

(Use a comma to separate answers as needed. Type an integer or a simplified fraction.)

- ☐ A. The zeros and the x-intercepts are the same. They are \_\_\_\_\_.
- ☐ B. The zeros and the x-intercepts are different. The zeros are \_\_\_\_\_, the x-intercepts are \_\_\_\_\_.

Answer: A. The zeros and the x-intercepts are the same. They are

$$-\frac{2}{3}, 4$$

ID: 2.3.19

18. Find the zeros of the following quadratic function by factoring. What are the x-intercepts of the graph of the function?

$$g(x) = x(x + 14) + 45$$

Select the correct choice below and fill in the answer box to complete your choice.

(Simplify your answer. Use a comma to separate answers as needed.)

- ☐ A. The zeros and the x-intercepts are the same. They are \_\_\_\_\_.
- ☐ B. The zeros and the x-intercepts are different. The zeros are \_\_\_\_\_, the x-intercepts are \_\_\_\_\_.

Answer: A. The zeros and the x-intercepts are the same. They are

$$-5, -9$$

ID: 2.3.23

19. Find the zeros of the quadratic function using the square root method. What are the x-intercepts of the graph of the function?

$$g(x) = (x - 1)^2 - 9$$

Select the correct choice below and fill in the answer box to complete your choice.

(Simplify your answer, including any radicals. Use integers or fractions for any numbers in the expression. Use a comma to separate answers as needed.)

- ☐ A. The zeros and the x-intercepts are the same. They are \_\_\_\_\_.
- ☐ B. The zeros and the x-intercepts are different. The zeros are \_\_\_\_\_, the x-intercepts are \_\_\_\_\_.

Answer: A. The zeros and the x-intercepts are the same. They are

$$4, -2$$

ID: 2.3.29

20. Find the real zeros, if any, of the quadratic function using the quadratic formula. What are the x-intercepts, if any, of the graph of the function?

$$f(x) = x^2 + 6x + 4$$

Select the correct choice below and, if necessary, fill in the answer box to complete your choice.

(Simplify your answer, including any radicals. Use integers or fractions for any numbers in the expression. Use a comma to separate answers as needed.)

- ☐ A. The zeros and the x-intercepts are different. The zeros are \_\_\_\_\_, the x-intercepts are \_\_\_\_\_.
- ☐ B. The zeros and the x-intercepts are the same. They are \_\_\_\_\_.
- ☐ C. There is no real zero solution and no x-intercept.

Answer: B. The zeros and the x-intercepts are the same. They are  $\boxed{-3 + \sqrt{5}, -3 - \sqrt{5}}$ .

ID: 2.3.41

21. Find the zeros, if any, of the quadratic function using the quadratic formula. What are the x-intercepts, if any, of the graph of the function?

$$f(x) = 8x^2 + 11 + 20x$$

Select the correct choice below and, if necessary, fill in the answer box to complete your choice.

(Simplify your answer, including any radicals. Use integers or fractions for any numbers in the expression. Use a comma to separate answers as needed.)

- ☐ A. The zeros and the x-intercepts are different. The zeros are \_\_\_\_\_, the x-intercepts are \_\_\_\_\_.
- ☐ B. The zeros and the x-intercepts are the same. They are \_\_\_\_\_.
- ☐ C. There is no real zero solution and no x-intercept.

Answer: B. The zeros and the x-intercepts are the same. They are  $\boxed{\frac{-5 + \sqrt{3}}{4}, \frac{-5 - \sqrt{3}}{4}}$ .

ID: 2.3.47

22. Find the real zeros, if any, of the following quadratic function using the quadratic formula. What are the x-intercepts, if any, of the graph of the function?

$$G(x) = 2x(x + 2) - 5$$

Select the correct choice below and, if necessary, fill in the answer box to complete your choice.

(Simplify your answer, including any radicals. Use integers or fractions for any numbers in the expression. Use a comma to separate answers as needed.)

- ☐ A. The zeros and the x-intercepts are the same. They are \_\_\_\_\_.
- ☐ B. The zeros and the x-intercepts are different. The zeros are \_\_\_\_\_, the x-intercepts are \_\_\_\_\_.
- ☐ C. There is no real zero solution and no x-intercept.

Answer: A. The zeros and the x-intercepts are the same. They are

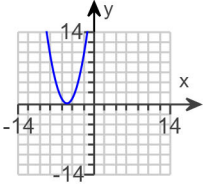
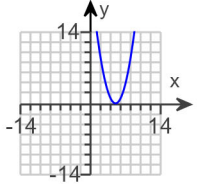
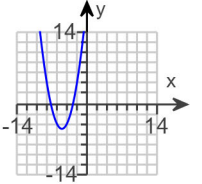
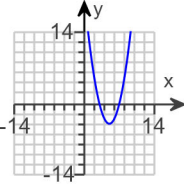
$$\frac{-2 + \sqrt{14}}{2}, \frac{-2 - \sqrt{14}}{2}$$

ID: 2.3.49

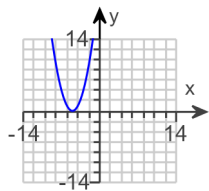
23. Match the graph with the following function.

$$f(x) = x^2 + 10x + 25$$

Choose the correct graph below.

- ☐ A. 
- ☐ B. 
- ☐ C. 
- ☐ D. 

Answer:



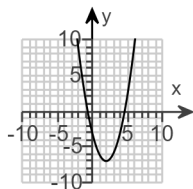
A.

ID: 2.4.15

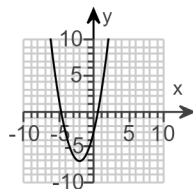
24. Match the function  $f(x) = x^2 - 4x + 3$  to one of the given graphs.

Choose the correct graph below.

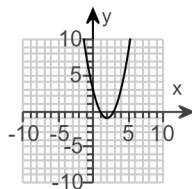
☐ A.



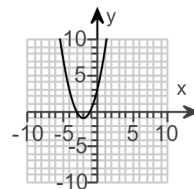
☐ B.



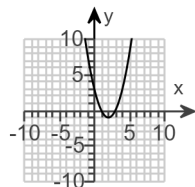
☐ C.



☐ D.



Answer:



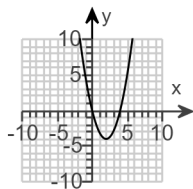
C.

ID: 2.4.17

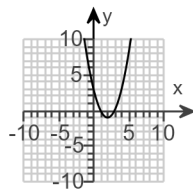
25. Match the function  $f(x) = x^2 - 4x$  to one of the given graphs.

Choose the correct graph below.

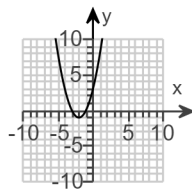
☐ A.



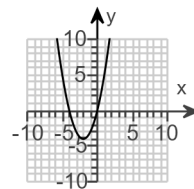
☐ B.



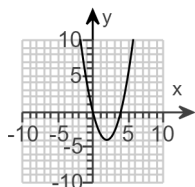
☐ C.



☐ D.



Answer:



A.

ID: 2.4.19

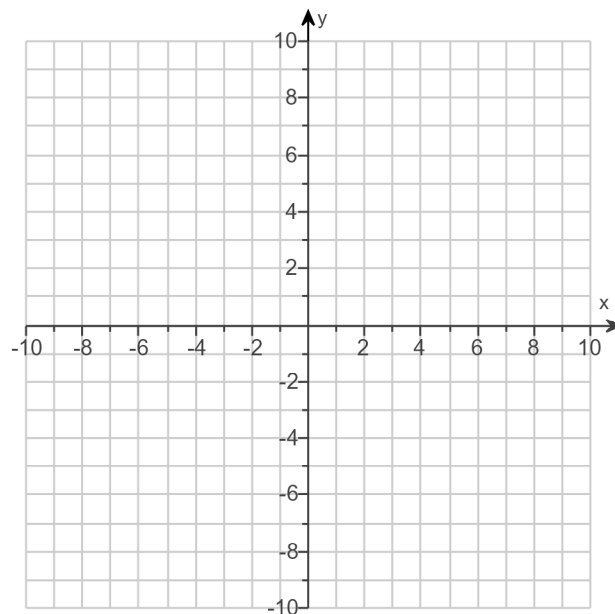
26.

Graph the function  $f(x) = (x + 3)^2 - 4$  by starting with the graph of  $y = x^2$  and using transformations (shifting, stretching/compressing, and/or reflecting).

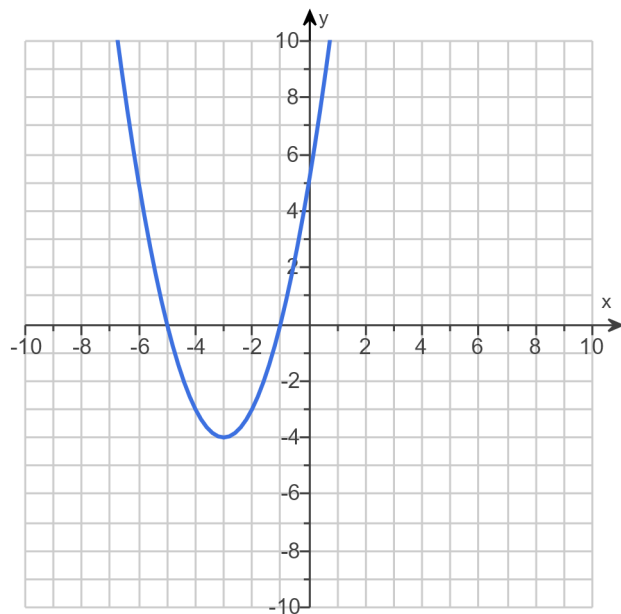
Select all the transformations needed to graph the given function using  $y = x^2$ .

- ☐ A. Shift the graph to the left 3 units.
- ☐ B. Reflect the graph about the y-axis.
- ☐ C. Shift the graph to the right 3 units.
- ☐ D. Reflect the graph about the x-axis.
- ☐ E. Compress the graph vertically by a factor of 4.
- ☐ F. Shift the graph down 4 units.
- ☐ G. Stretch the graph vertically by a factor of 3.
- ☐ H. Shift the graph up 4 units.

Use the graphing tool to graph the function.



Answers A. Shift the graph to the left 3 units., F. Shift the graph down 4 units.



ID: 2.4.23-Setup & Solve

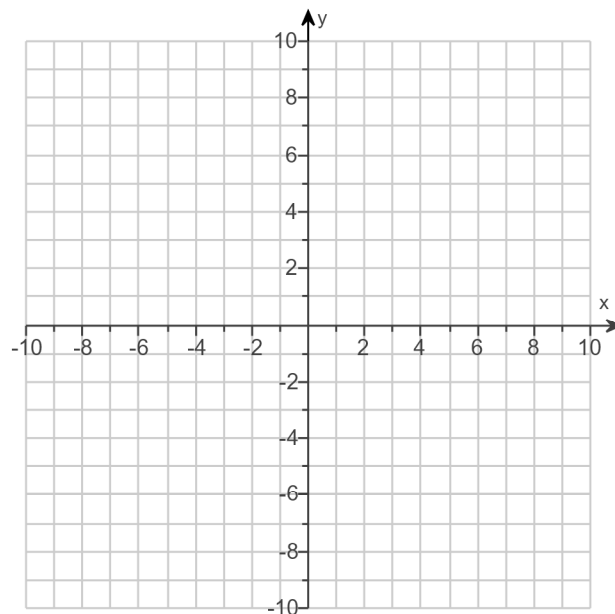
27.

Graph the function  $f(x) = x^2 + 10x + 24$  by starting with the graph of  $y = x^2$  and using transformations (shifting, stretching/compressing, and/or reflecting).

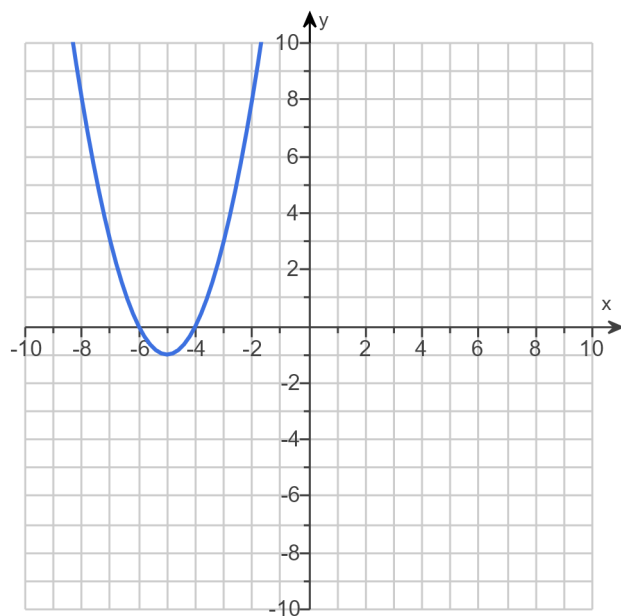
Select all the transformations needed to graph the given function using  $y = x^2$ .

- ☐ A. Stretch the graph vertically by a factor of 10.
- ☐ B. Shift the graph up 1 unit.
- ☐ C. Shift the graph to the right 5 units.
- ☐ D. Shift the graph down 1 unit.
- ☐ E. Reflect the graph about the x-axis.
- ☐ F. Compress the graph vertically by a factor of 1.
- ☐ G. Reflect the graph about the y-axis.
- ☐ H. Shift the graph to the left 5 units.

Use the graphing tool to graph the function.



Answers D. Shift the graph down 1 unit., H. Shift the graph to the left 5 units.



ID: 2.4.25-Setup & Solve

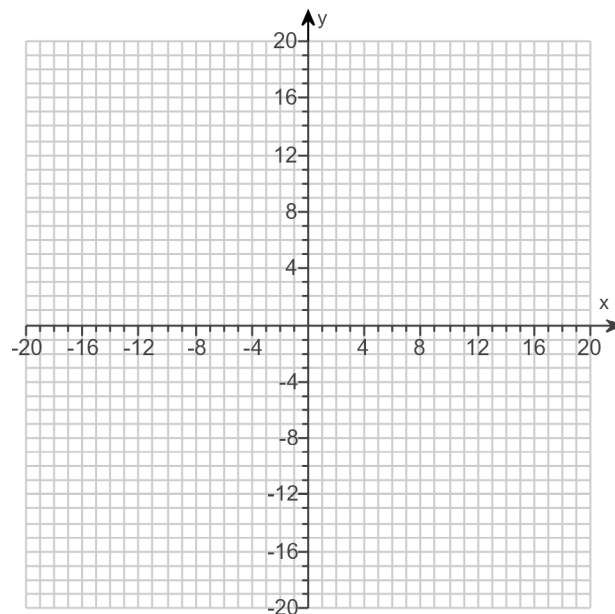
28.

Graph the function  $f(x) = -x^2 - 4x$  by starting with the graph of  $y = x^2$  and using transformations (shifting, stretching/compressing, and/or reflecting).

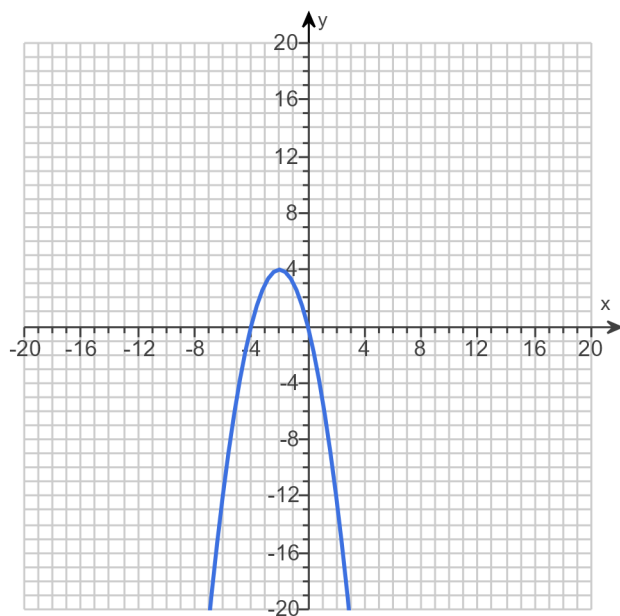
Select all the transformations needed to graph the given function using  $y = x^2$ .

- ☐ A. Compress the graph vertically by a factor of 4.
- ☐ B. Reflect the graph about the x-axis.
- ☐ C. Shift the graph up 4 units.
- ☐ D. Shift the graph down 4 units.
- ☐ E. Shift the graph to the right 2 units.
- ☐ F. Reflect the graph about the y-axis.
- ☐ G. Stretch the graph vertically by a factor of  $-2$ .
- ☐ H. Shift the graph to the left 2 units.

Use the graphing tool to graph the function.



Answers B. Reflect the graph about the x-axis., C. Shift the graph up 4 units., H. Shift the graph to the left 2 units.



ID: 2.4.29-Setup & Solve

29.



For the quadratic function  $f(x) = x^2 - 2x - 3$ , answer parts (a) through (c).

(a) Graph the quadratic function by determining whether its graph opens up or down and by finding its vertex, axis of symmetry, y-intercept, and x-intercepts, if any.

Does the graph of  $f$  open up or down?

- ☐ down
- ☐ up

What are the coordinates of the vertex?

The vertex of the parabola is .

(Type an ordered pair. Use integers or fractions for any numbers in the expression.)

What is the equation of the axis of symmetry?

The axis of symmetry is .

(Type an equation.)

What is/are the x-intercept(s)? Select the correct choice below and, if necessary, fill in the answer box to complete your choice.

- ☐ A. The x-intercept(s) is/are

.

(Type an integer or a decimal. Use a comma to separate answers as needed.)

- ☐ B. There are no x-intercepts.

What is the y-intercept? Select the correct choice below and, if necessary, fill in the answer box to complete your choice.

- ☐ A. The y-intercept is .

(Type an integer or a decimal.)

- ☐ B. There is no y-intercept.

Use the graphing tool to graph the function.

(b) Determine the domain and the range of the function.

The domain of  $f$  is .

(Type your answer in interval notation.)

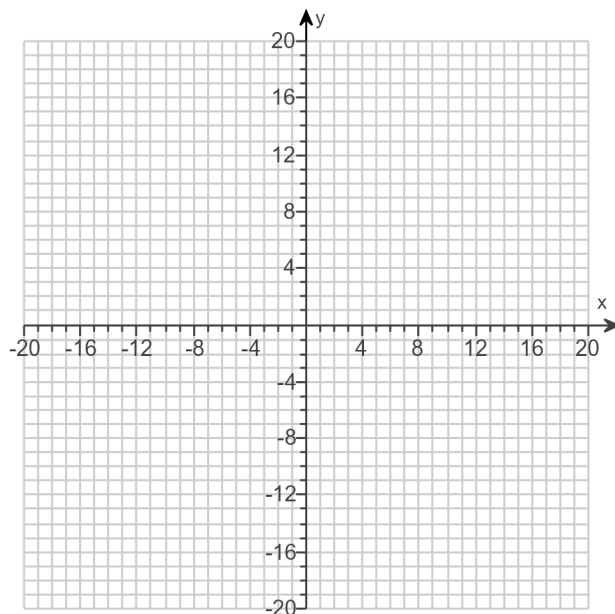
The range of  $f$  is .

(Type your answer in interval notation.)

(c) Determine where the function is increasing and where it is decreasing.

The function is increasing on the interval .

(Type your answer in interval notation.)



Answers up

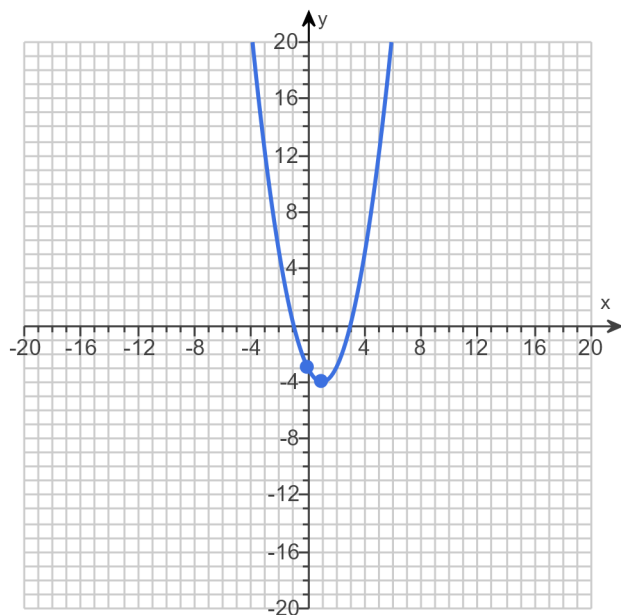
$(1, -4)$

$x = 1$

A. The x-intercept(s) is/are .

(Type an integer or a decimal. Use a comma to separate answers as needed.)

A. The y-intercept is . (Type an integer or a decimal.)



$(-\infty, \infty)$

$[-4, \infty)$

$[1, \infty)$

$(-\infty, 1]$

ID: 2.4.37

30.

For the quadratic function  $f(x) = x^2 - 2x + 1$ , answer parts (a) through (c).

(a) Graph the quadratic function by determining whether its graph opens up or down and by finding its vertex, axis of symmetry, y-intercept, and x-intercepts, if any.

Does the graph of  $f$  open up or down?

- ☐ down  
☐ up

What are the coordinates of the vertex?

The vertex of the parabola is .

(Type an ordered pair. Use integers or fractions for any numbers in the expression.)

What is the equation of the axis of symmetry?

The axis of symmetry is .

(Type an equation.)

What is the y-intercept? Select the correct choice below and, if necessary, fill in the answer box to complete your choice.

- ☐ A. The y-intercept is .
- (Type an integer or a decimal.)
- ☐ B. There is no y-intercept.

What is/are the x-intercept(s)? Select the correct choice below and, if necessary, fill in the answer box to complete your choice.

- ☐ A. The x-intercept(s) is/are .
- (Type an integer or a decimal. Use a comma to separate answers as needed.)
- ☐ B. There are no x-intercepts.

Use the graphing tool to graph the function.

(b) Determine the domain and the range of the function.

The domain of  $f$  is .

(Type your answer in interval notation.)

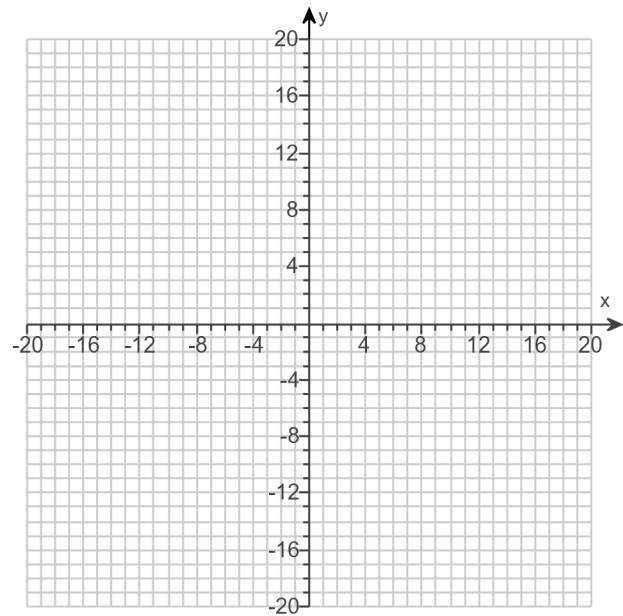
The range of  $f$  is .

(Type your answer in interval notation.)

(c) Determine where the function is increasing and where it is decreasing.

The function is increasing on the interval .

(Type your answer in interval notation.)



Answers up

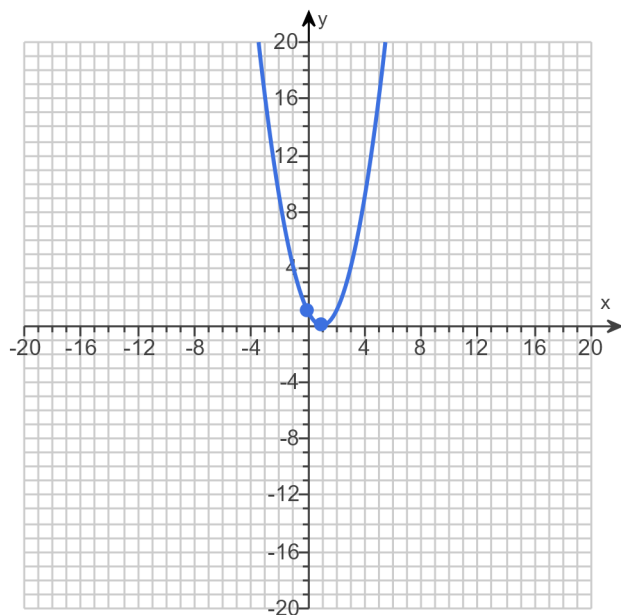
(1,0)

$x = 1$

A. The y-intercept is . (Type an integer or a decimal.)

A. The x-intercept(s) is/are .

(Type an integer or a decimal. Use a comma to separate answers as needed.)



$(-\infty, \infty)$

$[0, \infty)$

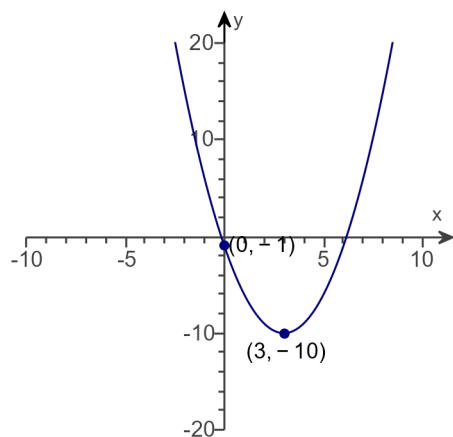
$[1, \infty)$

$(-\infty, 1]$

ID: 2.4.39

31.

Determine the quadratic function whose graph is given below.



The quadratic function which describes the given graph is

$f(x) =$  .

(Type an expression.)

Answer:  $x^2 - 6x - 1$

ID: 2.4.49

32. Determine, without graphing, whether the given quadratic function has a maximum value or a minimum value and then find the value.

$$f(x) = -2x^2 + 4x - 7$$

Does the quadratic function  $f$  have a minimum value or a maximum value?

- ☐ The function  $f$  has a minimum value.
- ☐ The function  $f$  has a maximum value.

What is this minimum or maximum value?

(Simplify your answer.)

Answers The function  $f$  has a maximum value.

- 5

ID: 2.4.59

33. Use the rational zeros theorem to find all the real zeros of the polynomial function. Use the zeros to factor  $f$  over the real numbers.

$$f(x) = x^3 - 3x^2 - 25x - 21$$

Find the real zeros of  $f$ . Select the correct choice below and, if necessary, fill in the answer box to complete your answer.

- ☐ A.  $x =$  \_\_\_\_\_  
(Simplify your answer. Type an exact answer, using radicals as needed. Use integers or fractions for any rational numbers in the expression. Use a comma to separate answers as needed.)
- ☐ B. There are no real zeros.

Use the real zeros to factor  $f$ .

$$f(x) = \boxed{\phantom{000000}}$$

(Simplify your answer. Type your answer in factored form. Type an exact answer, using radicals as needed. Use integers or fractions for any rational numbers in the expression.)

Answers A.  $x =$

(Simplify your answer. Type an exact answer, using radicals as needed. Use integers or fractions for any rational numbers in the expression. Use a comma to separate answers as needed.)

$$(x + 1)(x + 3)(x - 7)$$

ID: 3.2.45

34. Use the rational zeros theorem to find all the real zeros of the polynomial function. Use the zeros to factor  $f$  over the real numbers.

$$f(x) = x^4 + 4x^3 - 9x^2 - 16x + 20$$

What are the real zeros? Select the correct choice below and, if necessary, fill in the answer box to complete your answer.

- ☐ A.  $x =$  \_\_\_\_\_  
(Simplify your answer. Type an exact answer, using radicals as needed. Use integers or fractions for any rational numbers in the expression. Use a comma to separate answers as needed.)
- ☐ B. There are no real zeros.

Use the real zeros to factor  $f$ .

$$f(x) = \boxed{\phantom{000000}}$$

(Simplify your answer. Type your answer in factored form. Type an exact answer, using radicals as needed. Use integers or fractions for any rational numbers in the expression.)

Answers A.  $x =$   **$-5, 1, 2, -2$**

(Simplify your answer. Type an exact answer, using radicals as needed. Use integers or fractions for any rational numbers in the expression. Use a comma to separate answers as needed.)

$$(x + 5)(x - 1)(x + 2)(x - 2)$$

ID: 3.2.53

35. Solve the equation in the real number system.

$$3x^4 - 28x^3 + 81x^2 - 84x + 20 = 0$$

What are the real solutions of the equation? Select the correct choice below and fill in any answer boxes in your choice.

- ☐ A.  $x =$  \_\_\_\_\_  
(Simplify your answer. Type an exact answer, using radicals as needed. Use integers or fractions for any numbers in the expression. Use a comma to separate answers as needed. Type each answer only once; do not duplicate answers in the case of repeated roots.)
- ☐ B. There are no real solutions.

Answer: A.  $x =$   **$\frac{1}{3}, 2, 5$**

(Simplify your answer. Type an exact answer, using radicals as needed. Use integers or fractions for any numbers in the expression. Use a comma to separate answers as needed. Type each answer only once; do not duplicate answers in the case of repeated roots.)

ID: 3.2.67



36. Find the vertical, horizontal, and oblique asymptotes, if any, for the following rational function.

$$R(x) = \frac{8x}{x + 10}$$

---

Select the correct choice below and fill in any answer boxes within your choice.

- ☐ A. The vertical asymptote(s) is/are  $x =$  \_\_\_\_\_.  
(Use a comma to separate answers as needed.)
- ☐ B. There is no vertical asymptote.

Select the correct choice below and fill in any answer boxes within your choice.

- ☐ A. The horizontal asymptote(s) is/are  $y =$  \_\_\_\_\_.  
(Use a comma to separate answers as needed.)
- ☐ B. There is no horizontal asymptote.

Select the correct choice below and fill in any answer boxes within your choice.

- ☐ A. The oblique asymptote(s) is/are  $y =$  \_\_\_\_\_.  
(Use a comma to separate answers as needed.)
- ☐ B. There is no oblique asymptote.

Answers A. The vertical asymptote(s) is/are  $x =$  . (Use a comma to separate answers as needed.)

A. The horizontal asymptote(s) is/are  $y =$  . (Use a comma to separate answers as needed.)

B. There is no oblique asymptote.

ID: 3.4.45

---

37. For  $f(x) = 4x + 9$  and  $g(x) = 9x$ , find the following composite functions and state the domain of each.

- (a)  $f \circ g$       (b)  $g \circ f$       (c)  $f \circ f$       (d)  $g \circ g$

(a)  $(f \circ g)(x) =$   (Simplify your answer.)

Select the correct choice below and fill in any answer boxes within your choice.

- ☐ A. The domain of  $f \circ g$  is  $\{x \mid \text{_____}\}$ .  
(Type an inequality. Use integers or fractions for any numbers in the expression. Use a comma to separate answers as needed.)
- ☐ B. The domain of  $f \circ g$  is all real numbers.

(b)  $(g \circ f)(x) =$   (Simplify your answer.)

Select the correct choice below and fill in any answer boxes within your choice.

- ☐ A. The domain of  $g \circ f$  is  $\{x \mid \text{_____}\}$ .  
(Type an inequality. Use integers or fractions for any numbers in the expression. Use a comma to separate answers as needed.)
- ☐ B. The domain of  $g \circ f$  is all real numbers.

(c)  $(f \circ f)(x) =$   (Simplify your answer.)

Select the correct choice below and fill in any answer boxes within your choice.

- ☐ A. The domain of  $f \circ f$  is  $\{x \mid \text{_____}\}$ .  
(Type an inequality. Use integers or fractions for any numbers in the expression. Use a comma to separate answers as needed.)
- ☐ B. The domain of  $f \circ f$  is all real numbers.

(d)  $(g \circ g)(x) =$   (Simplify your answer.)

Select the correct choice below and fill in any answer boxes within your choice.

- ☐ A. The domain of  $g \circ g$  is  $\{x \mid \text{_____}\}$ .  
(Type an inequality. Use integers or fractions for any numbers in the expression. Use a comma to separate answers as needed.)
- ☐ B. The domain of  $g \circ g$  is all real numbers.

Answers  $36x + 9$

B. The domain of  $f \circ g$  is all real numbers.

$36x + 81$

B. The domain of  $g \circ f$  is all real numbers.

$16x + 45$

B. The domain of  $f \circ f$  is all real numbers.

$81x$

B. The domain of  $g \circ g$  is all real numbers.

ID: 4.1.23

---

38. For  $f(x) = 3x + 3$  and  $g(x) = x^2$ , find the following composite functions and state the domain of each.

(a)  $f \circ g$       (b)  $g \circ f$       (c)  $f \circ f$       (d)  $g \circ g$

(a)  $(f \circ g)(x) =$   (Simplify your answer.)

Select the correct choice below and, if necessary, fill in the answer box within your choice.

- ☐ A. The domain of  $f \circ g$  is  $\{x \mid \text{_____}\}$ .  
(Type an inequality. Use integers or fractions for any numbers in the expression. Use a comma to separate answers as needed.)
- ☐ B. The domain of  $f \circ g$  is all real numbers.

(b)  $(g \circ f)(x) =$   (Simplify your answer.)

Select the correct choice below and, if necessary, fill in the answer box within your choice.

- ☐ A. The domain of  $g \circ f$  is  $\{x \mid \text{_____}\}$ .  
(Type an inequality. Use integers or fractions for any numbers in the expression. Use a comma to separate answers as needed.)
- ☐ B. The domain of  $g \circ f$  is all real numbers.

(c)  $(f \circ f)(x) =$   (Simplify your answer.)

Select the correct choice below and, if necessary, fill in the answer box within your choice.

- ☐ A. The domain of  $f \circ f$  is  $\{x \mid \text{_____}\}$ .  
(Type an inequality. Use integers or fractions for any numbers in the expression. Use a comma to separate answers as needed.)
- ☐ B. The domain of  $f \circ f$  is all real numbers.

(d)  $(g \circ g)(x) =$   (Simplify your answer.)

Select the correct choice below and, if necessary, fill in the answer box within your choice.

- ☐ A. The domain of  $g \circ g$  is  $\{x \mid \text{_____}\}$ .  
(Type an inequality. Use integers or fractions for any numbers in the expression. Use a comma to separate answers as needed.)
- ☐ B. The domain of  $g \circ g$  is all real numbers.

Answers  $3x^2 + 3$

B. The domain of  $f \circ g$  is all real numbers.

$$9x^2 + 18x + 9$$

B. The domain of  $g \circ f$  is all real numbers.

$$9x + 12$$

B. The domain of  $f \circ f$  is all real numbers.

$$x^4$$

B. The domain of  $g \circ g$  is all real numbers.

ID: 4.1.25

---

39.

The function  $f(x) = 6x - 3$  is one-to-one.

(a) Find the inverse of  $f$  and check the answer.

(b) Find the domain and the range of  $f$  and  $f^{-1}$ .

(c) Graph  $f$ ,  $f^{-1}$ , and  $y = x$  on the same coordinate axes.

(a)  $f^{-1}(x) =$

(Simplify your answer. Use integers or fractions for any numbers in the expression.)

(b) Find the domain of  $f$ . Select the correct choice below and, if necessary, fill in the answer box to complete your choice.

- ☐ A. The domain is  $\{x|x \leq \text{_____}\}$ .
- ☐ B. The domain is  $\{x|x \geq \text{_____}\}$ .
- ☐ C. The domain is  $\{x|x \neq \text{_____}\}$ .
- ☐ D. The domain is the set of all real numbers.

Find the range of  $f$ . Select the correct choice below and, if necessary, fill in the answer box to complete your choice.

- ☐ A. The range is  $\{y|y \neq \text{_____}\}$ .
- ☐ B. The range is  $\{y|y \leq \text{_____}\}$ .
- ☐ C. The range is  $\{y|y \geq \text{_____}\}$ .
- ☐ D. The range is the set of all real numbers.

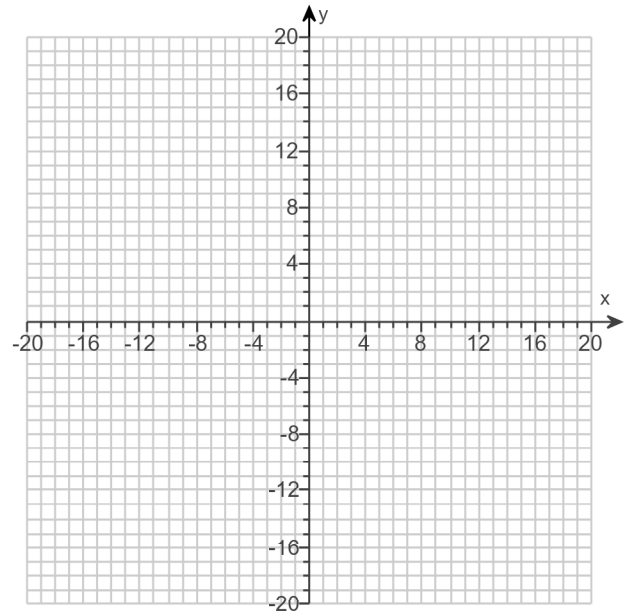
Find the domain of  $f^{-1}$ . Select the correct choice below and, if necessary, fill in the answer box to complete your choice.

- ☐ A. The domain is  $\{x|x \neq \text{_____}\}$ .
- ☐ B. The domain is  $\{x|x \geq \text{_____}\}$ .
- ☐ C. The domain is  $\{x|x \leq \text{_____}\}$ .
- ☐ D. The domain is the set of all real numbers.

Find the range of  $f^{-1}$ . Select the correct choice below and, if necessary, fill in the answer box to complete your choice.

- ☐ A. The range is  $\{y|y \leq \text{_____}\}$ .
- ☐ B. The range is  $\{y|y \neq \text{_____}\}$ .
- ☐ C. The range is  $\{y|y \geq \text{_____}\}$ .
- ☐ D. The range is the set of all real numbers.

(c) Graph  $f$ ,  $f^{-1}$ , and  $y = x$  on the same coordinate axes. Use the graphing tool to graph the functions.



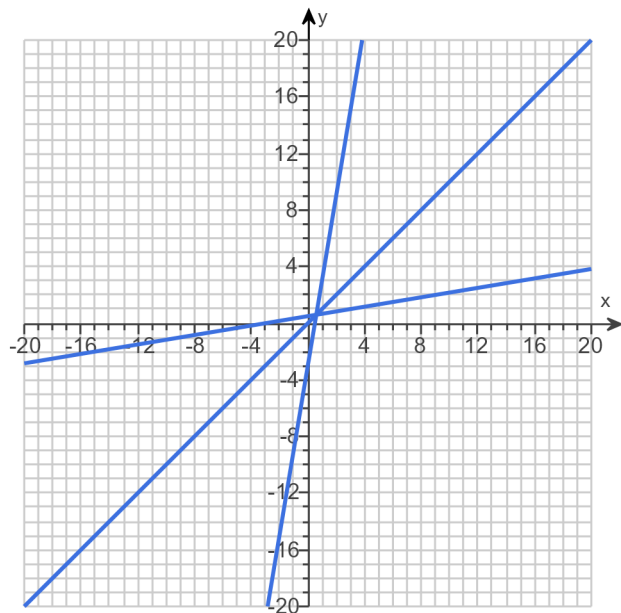
Answers  $\frac{x+3}{6}$

D. The domain is the set of all real numbers.

D. The range is the set of all real numbers.

D. The domain is the set of all real numbers.

D. The range is the set of all real numbers.



ID: 4.2.53

40. Solve the equation.

$$64^{-x+52} = 128^x$$

The solution set is  $\{\text{input box}\}$ .

(Type an integer or a simplified fraction. Use a comma to separate answers as needed.)

Answer: 24

ID: 4.3.73



41. Solve the equation.

$$\log_2(2x + 1) = 3$$

Change the given logarithmic equation to exponential form.

(Type an equation. Do not simplify.)

The solution set is  $\{ \text{ } \}$ .

(Simplify your answer. Use a comma to separate answers as needed.)

Answers  $2x + 1 = 2^3$

$$\frac{7}{2}$$

ID: 4.4.91-Setup & Solve

42. Solve the following logarithmic equation.

$$\log_5 x = 3$$

Select the correct choice below and, if necessary, fill in the answer box to complete your choice.

- ☐ A. The solution set is  $\{ \text{ } \}$ .  
(Simplify your answer. Type an exact answer. Use a comma to separate answers as needed.)
- ☐ B. There is no solution.

Answer: A. The solution set is  $\{ \text{125} \}$ .

(Simplify your answer. Type an exact answer. Use a comma to separate answers as needed.)

ID: 4.6.5

43. Solve the following logarithmic equation.

$$\log_2(5x) = 4$$

Select the correct choice below and, if necessary, fill in the answer box to complete your choice.

- ☐ A. The solution set is  $\{\rule{1.5cm}{0.4pt}\}$ .  
(Simplify your answer. Type an exact answer. Use a comma to separate answers as needed.)
- ☐ B. There is no solution.

Answer: A. The solution set is  $\left\{\frac{16}{5}\right\}$ .

(Simplify your answer. Type an exact answer. Use a comma to separate answers as needed.)

ID: 4.6.7

44. Solve the following logarithmic equation.

$$\log_6(x + 6) = \log_6 7$$

Select the correct choice below and, if necessary, fill in the answer box to complete your choice.

- ☐ A. The solution set is  $\{\rule{1.5cm}{0.4pt}\}$ .  
(Simplify your answer. Type an exact answer. Use a comma to separate answers as needed.)
- ☐ B. There is no solution.

Answer: A. The solution set is  $\{1\}$ .

(Simplify your answer. Type an exact answer. Use a comma to separate answers as needed.)

ID: 4.6.9

45. Find the amount that results from the given investment.

\$400 invested at 5% compounded quarterly after a period of 4 years

After 4 years, the investment results in \$ .  
(Round to the nearest cent as needed.)

Answer: 487.96

ID: 4.7.7

46. Find the amount that results from the given investment.

\$400 invested at 5% compounded daily after a period of 4 years

After 4 years, the investment results in \$ .  
(Round to the nearest cent as needed.)

Answer: 488.55

ID: 4.7.11

47. How many years will it take for an initial investment of \$10,000 to grow to \$35,000? Assume a rate of interest of 19% compounded continuously.

It will take about  years for the investment to grow to \$35,000.  
(Round to two decimal places as needed.)

Answer: 6.59

ID: 4.7.41

48. Solve the system of equations. If the system has no solution, say that it is inconsistent.

$$\begin{cases} 4x - 3y = -1 \\ 5x + y = 13 \end{cases}$$

Select the correct choice below and, if necessary, fill in any answer boxes within your choice.

- ☐ A. The solution of the system is  $x =$   and  $y =$  .  
(Type an integers or simplified fractions.)
- ☐ B. There are infinitely many solutions. Using ordered pairs, the solution can be written as  $\{(x,y) | x =$   ,  $y$  any real number  $\}$ .  
(Simplify your answer. Type an expression using  $y$  as the variable as needed.)
- ☐ C. The system is inconsistent.

Answer: A. The solution of the system is  $x =$   and  $y =$  .  
(Type an integers or simplified fractions.)

ID: 6.1.33

49. Solve the given system of equations. If the system has no solution, say that it is inconsistent.

$$\begin{cases} x - 3y + 4z = 24 \\ 2x + y + z = 6 \\ -2x + 3y - 3z = -22 \end{cases}$$

Select the correct choice below and fill in any answer boxes within your choice.

- ☐ A. The solution is  $x =$  \_\_\_\_\_,  $y =$  \_\_\_\_\_, and  $z =$  \_\_\_\_\_. (Type integers or simplified fractions.)
- ☐ B. There are infinitely many solutions. Using ordered triplets, they can be expressed as  $\{(x,y,z) \mid x =$  \_\_\_\_\_,  $y =$  \_\_\_\_\_,  $z$  any real number  $\}$ . (Simplify your answers. Type expressions using  $z$  as the variable as needed.)
- ☐ C. There are infinitely many solutions. Using ordered triplets, they can be expressed as  $\{(x,y,z) \mid x =$  \_\_\_\_\_,  $y$  any real number,  $z$  any real number  $\}$ . (Simplify your answer. Type an expression using  $y$  and  $z$  as the variables as needed.)
- ☐ D. The system is inconsistent.

Answer: A.

The solution is  $x =$  ,  $y =$  , and  $z =$  . (Type integers or simplified fractions.)

ID: 6.1.45